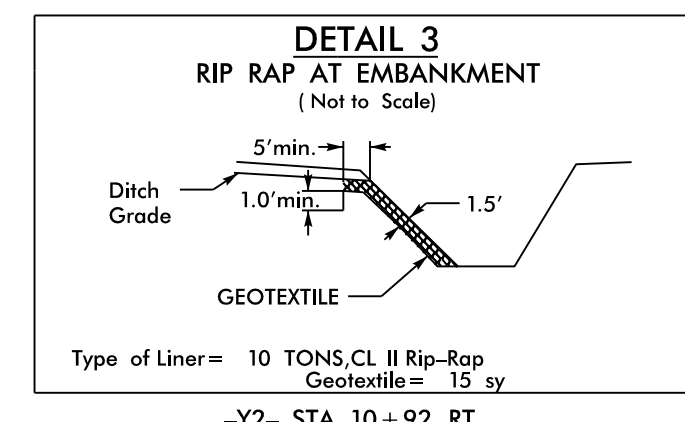
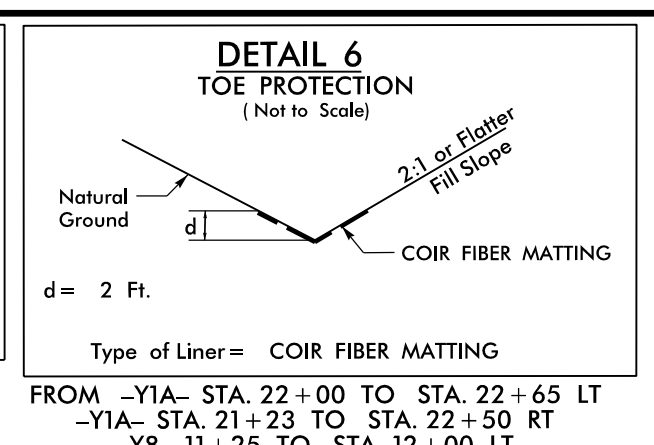
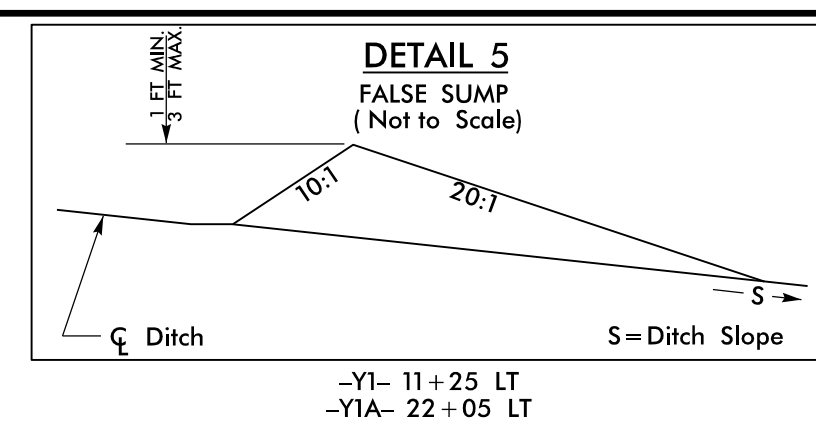


REVISIONS
6/16/2025: WIDENED DRIVEWAY TO 36' AND ADDED DRIVEWAY TO 36' AND ADDED SUPERELEVATION -Y1A-; ADDED DRAINAGE IN ROUNDABOUTS - ACC

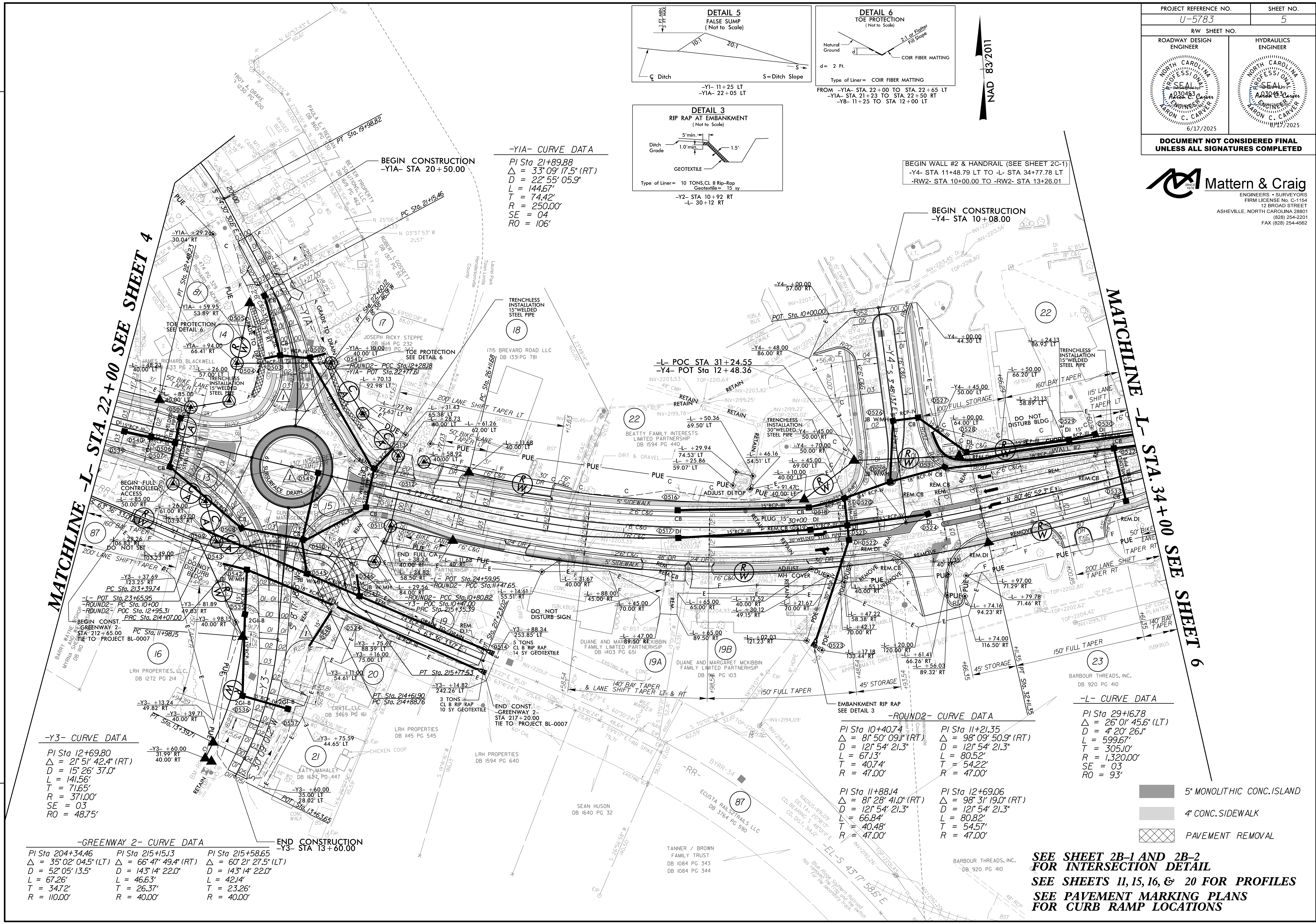
PROJECT REFERENCE NO. U-5783		SHEET NO. 5	
ROADWAY DESIGN ENGINEER		HYDRAULICS ENGINEER	
DOCUMENT NOT CONSIDERED FINAL UNLESS ALL SIGNATURES COMPLETED			

Mattern & Craig
ENGINEERS • SURVEYORS
FIRM LICENSE No. C-1154
12 BROAD STREET
ASHEVILLE, NORTH CAROLINA 28801
(828) 254-2201
FAX (828) 254-4562



-Y1A- CURVE DATA
 PI Sta 21+89.88
 $\Delta = 33^\circ 09' 17.5''$ (RT)
 $D = 22^\circ 55' 05.9''$
 $L = 144.67'$
 $T = 74.42'$
 $R = 250.00'$
 $SE = 04'$
 $RO = 106'$

BEGIN WALL #2 & HANDRAIL (SEE SHEET 2C-1)
 -Y4- STA 11+48.79 LT TO -L- STA 34+77.78 LT
 -RW2- STA 10+00.00 TO -RW2- STA 13+26.01



-Y3- CURVE DATA
 PI Sta 12+69.80
 $\Delta = 21^\circ 51' 42.4''$ (RT)
 $D = 15^\circ 26' 37.0''$
 $L = 141.56'$
 $T = 71.65'$
 $R = 371.00'$
 $SE = 03'$
 $RO = 48.75'$

-GREENWAY 2- CURVE DATA
 PI Sta 204+34.46 $\Delta = 35^\circ 02' 04.5''$ (LT)
 $D = 52^\circ 05' 13.5''$
 $L = 67.26'$
 $T = 347.2'$
 $R = 110.00'$

END CONSTRUCTION -Y3- STA 13+60.00
 PI Sta 215+15.13 $\Delta = 66^\circ 47' 49.4''$ (RT)
 $D = 143^\circ 14' 22.0''$
 $L = 46.63'$
 $T = 26.37'$
 $R = 40.00'$

END CONSTRUCTION -Y3- STA 13+60.00
 PI Sta 215+58.65 $\Delta = 60^\circ 21' 27.5''$ (LT)
 $D = 143^\circ 14' 22.0''$
 $L = 42.14'$
 $T = 23.26'$
 $R = 40.00'$

-ROUND2- CURVE DATA
 PI Sta 10+40.74 $\Delta = 81^\circ 50' 09.1''$ (RT)
 $D = 12^\circ 54' 21.3''$
 $L = 67.13'$
 $T = 40.74'$
 $R = 47.00'$

PI Sta 11+21.35 $\Delta = 98^\circ 09' 50.9''$ (RT)
 $D = 12^\circ 54' 21.3''$
 $L = 599.67'$
 $T = 54.22'$
 $R = 47.00'$

PI Sta 11+88.14 $\Delta = 81^\circ 28' 41.0''$ (RT)
 $D = 12^\circ 54' 21.3''$
 $L = 66.84'$
 $T = 40.48'$
 $R = 47.00'$

PI Sta 12+69.06 $\Delta = 98^\circ 31' 19.0''$ (RT)
 $D = 12^\circ 54' 21.3''$
 $L = 80.82'$
 $T = 54.57'$
 $R = 47.00'$

-L- CURVE DATA
 PI Sta 29+16.78
 $\Delta = 26^\circ 01' 45.6''$ (LT)
 $D = 4^\circ 20' 26.1''$
 $L = 599.67'$
 $T = 305.00'$
 $R = 1,320.00'$
 $SE = 03'$
 $RO = 93'$

- 5' MONOLITHIC CONC. ISLAND
- 4' CONC. SIDEWALK
- PAVEMENT REMOVAL

SEE SHEET 2B-1 AND 2B-2 FOR INTERSECTION DETAIL
SEE SHEETS 11, 15, 16, & 20 FOR PROFILES
SEE PAVEMENT MARKING PLANS FOR CURB RAMP LOCATIONS